

Courtesy Of Christina A Reid Of Century 21 Leading

\$499,900 - 3419 169 Street, Edmonton

MLS® #E4414954

\$499,900

3 Bedroom, 2.50 Bathroom, 1,545 sqft
Single Family on 0.00 Acres

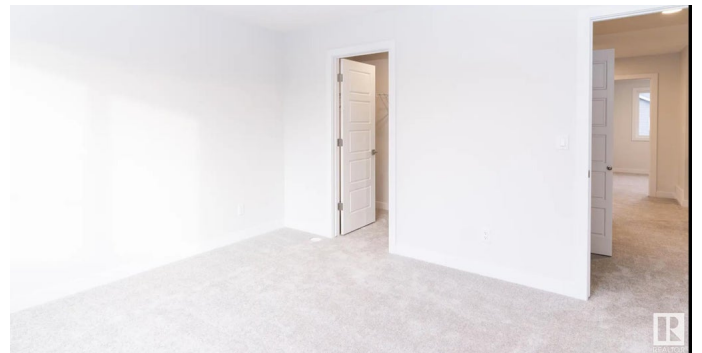
Glenriding Ravine, Edmonton, AB

This beautiful under construction home combines comfort, style, and efficiency with advanced air purification, high-efficiency heating, and a tankless hot water system. The spacious living room features elegant trim details, while the kitchen offers ceiling-height cabinetry and upgraded lighting. All appliances are included, and a side entrance provides future basement suite potential. Located in the family-friendly Saxony Glen community, enjoy a new playground, community pond, and nearby future amenities like FreshCo, a gas station, and daycare. Quick access to the Currents of Windermere and Anthony Henday makes commuting easy.

Built in 2024

Essential Information

MLS® #	E4414954
Price	\$499,900
Bedrooms	3
Bathrooms	2.50
Full Baths	2
Half Baths	1
Square Footage	1,545
Acres	0.00
Year Built	2024
Type	Single Family



Sub-Type	Detached Single Family
Style	2 Storey
Status	Active

Community Information

Address	3419 169 Street
Area	Edmonton
Subdivision	Glenridding Ravine
City	Edmonton
County	ALBERTA
Province	AB
Postal Code	T6W 5M4

Amenities

Amenities	On Street Parking, Carbon Monoxide Detectors, Detectors Smoke, Hot Water Tankless, Smart/Program. Thermostat, HRV System
Parking	Parking Pad Cement/Paved

Interior

Interior Features	ensuite bathroom
Appliances	Dishwasher-Built-In, Dryer, Refrigerator, Stove-Electric, Washer
Heating	Forced Air-1, Natural Gas
Stories	2
Has Basement	Yes
Basement	Full, Unfinished

Exterior

Exterior	Prefab, Vinyl
Exterior Features	Airport Nearby, Back Lane, Golf Nearby, Playground Nearby, Public Transportation, Schools, Shopping Nearby
Roof	Asphalt Shingles
Construction	Prefab, Vinyl
Foundation	Concrete Perimeter

School Information

Elementary	GEORGE H. LUCK K-6
Middle	RIVERBEND
High	STRATHCONA

Additional Information

Date Listed November 29th, 2024

Days on Market 128

Zoning Zone 56

DATA IS DEEMED RELIABLE BUT IS NOT GUARANTEED ACCURATE BY THE REALTORS® ASSOCIATION OF EDMONTON. COPYRIGHT 2025 BY THE REALTORS® ASSOCIATION OF EDMONTON. ALL RIGHTS RESERVED. Trademarks are owned or controlled by the Canadian Real Estate Association (CREA) and identify real estate professionals who are members of CREA (REALTOR®, REALTORS®) and/or the quality of services they provide (MLS®, Multiple Listing Service®)

Listing information last updated on April 6th, 2025 at 3:02am MDT