

Courtesy Of Justin J Vega Of RE/MAX River City

# \$789,000 - 15 Sydwyck Circle, Spruce Grove

MLS® #E4418438

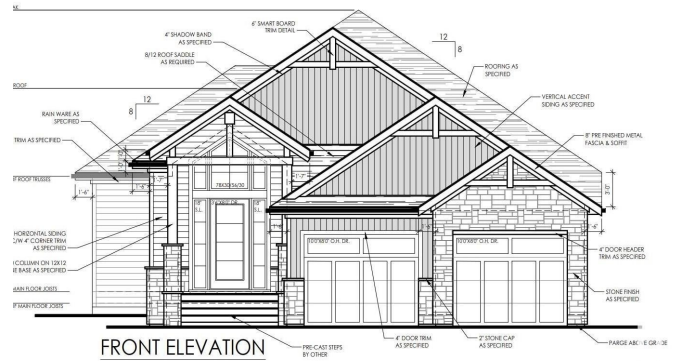
**\$789,000**

2 Bedroom, 2.00 Bathroom, 1,817 sqft

Single Family on 0.00 Acres

Fenwyck, Spruce Grove, AB

W.O.W. This is the Executive Bungalow that you have been looking for. Amazing views and situated on a Great lot - Southwest facing Backyard. Built by Raj Built Homes. Raj Built has established themselves as one of the Premier Builders in Fenwyck with over 20 Homes completed just in Fenwyck their reputation with their existing clients is second to None. This Home will come with Huge Windows and lots of light. This Custom Bungalow is finished with Great Detail and finished by a Master Millwork Carpenter. House features an open concept, wide plank flooring, Entertainers kitchen with extended Upgraded Cabinetry, Grand 2 Story Gas Fireplace, Spa Like Master Ensuite, Walk in Closet in Master, Main Floor Laundry, 4 piece Main floor Bath and Vaulted Ceilings. You wont find another like it. Raj Built Homes has a show home and several other homes to be viewed in Fenwyck at this time.



Built in 2025

## Essential Information

MLS® #	E4418438
Price	\$789,000
Bedrooms	2
Bathrooms	2.00
Full Baths	2

Square Footage	1,817
Acres	0.00
Year Built	2025
Type	Single Family
Sub-Type	Detached Single Family
Style	Bungalow
Status	Active

### **Community Information**

Address	15 Sydwyck Circle
Area	Spruce Grove
Subdivision	Fenwyck
City	Spruce Grove
County	ALBERTA
Province	AB
Postal Code	T7X 0A0

### **Amenities**

Amenities	Ceiling 10 ft., No Animal Home, No Smoking Home, Solar Equipment
Parking	Double Garage Attached

### **Interior**

Interior Features	ensuite bathroom
Appliances	Hood Fan
Heating	Forced Air-1, Natural Gas
Stories	1
Has Basement	Yes
Basement	Full, Unfinished

### **Exterior**

Exterior	Wood, Stone, Hardie Board Siding
Exterior Features	Backs Onto Park/Trees, Environmental Reserve, Golf Nearby, No Back Lane, No Through Road, Park/Reserve, Playground Nearby, Shopping Nearby
Roof	Asphalt Shingles
Construction	Wood, Stone, Hardie Board Siding
Foundation	Concrete Perimeter

### **Additional Information**

Date Listed January 17th, 2025

Days on Market 93

Zoning Zone 91

HOA Fees Freq. Annually

DATA IS DEEMED RELIABLE BUT IS NOT GUARANTEED ACCURATE BY THE REALTORS® ASSOCIATION OF EDMONTON. COPYRIGHT 2025 BY THE REALTORS® ASSOCIATION OF EDMONTON. ALL RIGHTS RESERVED. Trademarks are owned or controlled by the Canadian Real Estate Association (CREA) and identify real estate professionals who are members of CREA (REALTOR®, REALTORS®) and/or the quality of services they provide (MLS®, Multiple Listing Service®)

Listing information last updated on April 19th, 2025 at 11:02pm MDT