

Courtesy Of Amritpal S Hunjan Of RE/MAX River City

\$225,000 - 63 16231 19 Avenue, Edmonton

MLS® #E4422600

\$225,000

1 Bedroom, 1.00 Bathroom, 616 sqft
Condo / Townhouse on 0.00 Acres

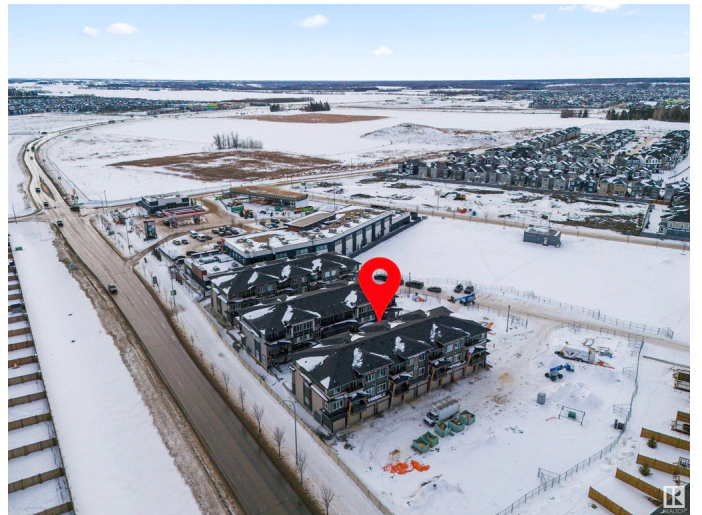
Glenridding Ravine, Edmonton, AB

Welcome to Essential Glenridding, where luxury meets convenience. This brand-new 1-bedroom + DEN, 1-bath, condo boasts stylish finishes throughout. The main floor features an attached single garage, an open-concept layout with a full bath, laundry room, bedroom, and den with a closet. Enjoy your private patio, perfect for outdoor relaxation or entertaining. The modern kitchen includes quartz countertops and upgraded cabinets, making it a fantastic space to cook or host! This unit is not one to miss! It also comes with a SINGLE CAR GARAGE!

Built in 2023

Essential Information

| | |
|----------------|------------------------|
| MLS® # | E4422600 |
| Price | \$225,000 |
| Bedrooms | 1 |
| Bathrooms | 1.00 |
| Full Baths | 1 |
| Square Footage | 616 |
| Acres | 0.00 |
| Year Built | 2023 |
| Type | Condo / Townhouse |
| Sub-Type | Townhouse |
| Style | Single Level Apartment |
| Status | Active |



Community Information

| | |
|-------------|--------------------|
| Address | 63 16231 19 Avenue |
| Area | Edmonton |
| Subdivision | Glenridding Ravine |
| City | Edmonton |
| County | ALBERTA |
| Province | AB |
| Postal Code | T6W 5C6 |

Amenities

| | |
|-----------|--|
| Amenities | Ceiling 9 ft., Detectors Smoke, Vinyl Windows, See Remarks |
| Parking | Single Garage Attached |

Interior

| | |
|--------------|--|
| Appliances | Dishwasher-Built-In, Dryer, Microwave Hood Fan, Refrigerator, Stove-Electric, Washer, Window Coverings |
| Heating | Forced Air-1, Natural Gas |
| Stories | 1 |
| Has Basement | Yes |
| Basement | None, No Basement |

Exterior

| | |
|-------------------|--|
| Exterior | Wood, Stone, Vinyl |
| Exterior Features | Airport Nearby, Golf Nearby, Landscaped, Park/Reserve, Playground Nearby, Schools, Ski Hill Nearby |
| Roof | Asphalt Shingles |
| Construction | Wood, Stone, Vinyl |
| Foundation | Concrete Perimeter |

School Information

| | |
|------------|-------------------------|
| Elementary | Dr. Margaret-Ann Armour |
| Middle | Dr. Margaret-Ann Armour |
| High | Lillian Osborne School |

Additional Information

| | |
|----------------|---------------------|
| Date Listed | February 22nd, 2025 |
| Days on Market | 44 |
| Zoning | Zone 56 |
| Condo Fee | \$137 |

DATA IS DEEMED RELIABLE BUT IS NOT GUARANTEED ACCURATE BY THE REALTORS® ASSOCIATION OF EDMONTON. COPYRIGHT 2025 BY THE REALTORS® ASSOCIATION OF EDMONTON. ALL RIGHTS RESERVED. Trademarks are owned or controlled by the Canadian Real Estate Association (CREA) and identify real estate professionals who are members of CREA (REALTOR®, REALTORS®) and/or the quality of services they provide (MLS®, Multiple Listing Service®)

Listing information last updated on April 7th, 2025 at 1:17am MDT