

Courtesy Of Peter F Estephan Of RE/MAX Elite

\$499,900 - 15011 67 Street, Edmonton

MLS® #E4424525

\$499,900

6 Bedroom, 2.00 Bathroom, 1,066 sqft
Single Family on 0.00 Acres

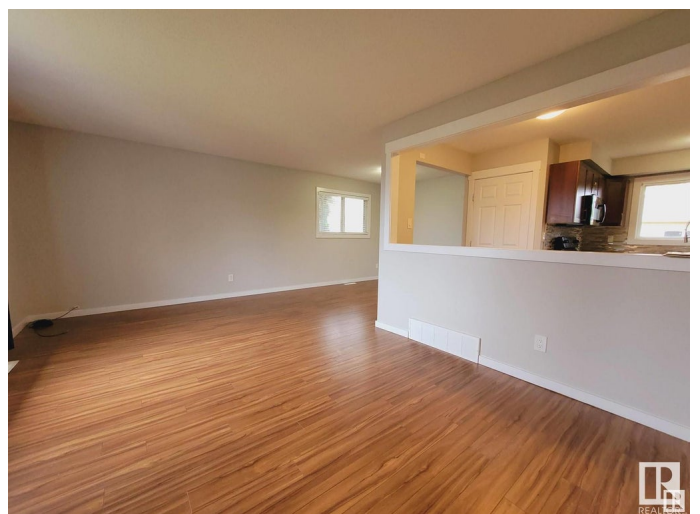
Kilkenny, Edmonton, AB

INVESTOR ALERT! This solid 6 bedroom, 2 bath bungalow with **LEGAL SUITE** and **SEPARATE ENTRANCE** has been beautifully upgraded throughout. Nicely situated in the mature neighborhood of Kilkenny on a quiet tree lined street, just a few minutes away from Londonderry Mall, great schools and recreational centre – the location is ideal! The main floor has a large living room with a big picture window flooding the home with sunlight! The modern kitchen has newer quality cabinetry, with a stylish tiled backsplash, plenty of counterspace and overlooks the dining area. The 3 generous bedrooms have tons of closet space and the bathroom has custom tile and new fixtures and fittings. The basement has another 3 bedrooms, living room, gorgeous 2ND KITCHEN, updated bathroom and plenty of storage space. The lot is massive! Fully landscaped with fruit trees, deck and an over sized double detached garage! **WELCOME HOME!**

Built in 1969

Essential Information

MLS® #	E4424525
Price	\$499,900
Bedrooms	6



Bathrooms	2.00
Full Baths	2
Square Footage	1,066
Acres	0.00
Year Built	1969
Type	Single Family
Sub-Type	Detached Single Family
Style	Bungalow
Status	Active

Community Information

Address	15011 67 Street
Area	Edmonton
Subdivision	Kilkenny
City	Edmonton
County	ALBERTA
Province	AB
Postal Code	T5C 0C9

Amenities

Amenities	Detectors Smoke, See Remarks
Parking Spaces	4
Parking	Double Garage Detached, Over Sized

Interior

Appliances	Hood Fan, Microwave Hood Fan, Stacked Washer/Dryer, Refrigerators-Two, Stoves-Two, Dishwasher-Two
Heating	Forced Air-1, Natural Gas
Stories	2
Has Basement	Yes
Basement	Full, Finished

Exterior

Exterior	Wood, Stucco
Exterior Features	Back Lane, Landscaped, Playground Nearby, Public Transportation, Schools, Shopping Nearby
Roof	Asphalt Shingles
Construction	Wood, Stucco
Foundation	Concrete Perimeter

Additional Information

Date Listed March 7th, 2025

Days on Market 7

Zoning Zone 02

DATA IS DEEMED RELIABLE BUT IS NOT GUARANTEED ACCURATE BY THE REALTORS® ASSOCIATION OF EDMONTON. COPYRIGHT 2025 BY THE REALTORS® ASSOCIATION OF EDMONTON. ALL RIGHTS RESERVED. Trademarks are owned or controlled by the Canadian Real Estate Association (CREA) and identify real estate professionals who are members of CREA (REALTOR®, REALTORS®) and/or the quality of services they provide (MLS®, Multiple Listing Service®)

Listing information last updated on March 14th, 2025 at 3:02am MDT