

# \$220,000 - 116 11615 Ellerslie Road, Edmonton

MLS® #E4427117

**\$220,000**

2 Bedroom, 2.00 Bathroom, 912 sqft  
Condo / Townhouse on 0.00 Acres

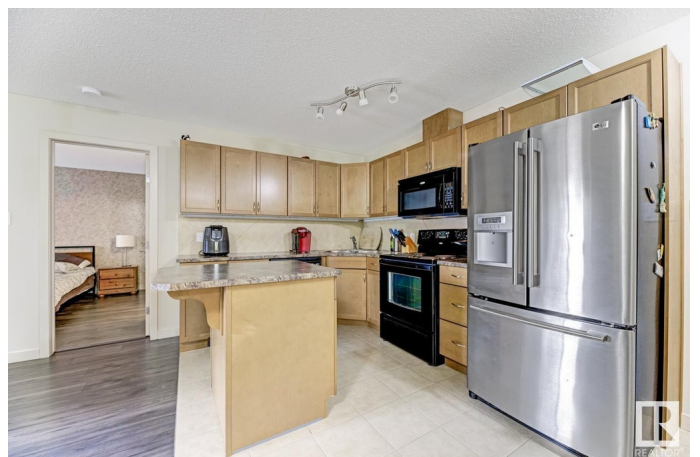
Rutherford (Edmonton), Edmonton, AB

Stunning 2-Bedroom Condo in Sought-After Rutherford Gate! Welcome to Rutherford Gate, a highly desirable complex offering premium amenities, including an onsite fitness center, social room, rentable guest suite, and heated underground parking with a storage cage. With shopping and transit right at your doorstep, convenience is unmatched! This SHOWSUITE-worthy 2-bedroom, 2-bathroom condo showcases pride of ownership throughout. Designed with an upgraded open-concept layout, the unit features: -Two walk-in closets for ample storage -Elegant maple cabinetry and a large island kitchen with stainless steel fridge -Ceramic tile and laminate flooring for a modern, low-maintenance finish -A spacious outdoor patio with a gas hookup, perfect for summer BBQs Donâ€™t miss this incredible opportunity to own in one of the best locations in Rutherford.

Built in 2007

## Essential Information

MLS® #	E4427117
Price	\$220,000
Bedrooms	2
Bathrooms	2.00
Full Baths	2



Square Footage	912
Acres	0.00
Year Built	2007
Type	Condo / Townhouse
Sub-Type	Lowrise Apartment
Style	Single Level Apartment
Status	Active

### **Community Information**

Address	116 11615 Ellerslie Road
Area	Edmonton
Subdivision	Rutherford (Edmonton)
City	Edmonton
County	ALBERTA
Province	AB
Postal Code	T6W 0J3

### **Amenities**

Amenities	Exercise Room, Guest Suite, Parking-Visitor, Patio, Storage-Locker Room, Natural Gas BBQ Hookup
Parking	Heated, Underground

### **Interior**

Interior Features	ensuite bathroom
Appliances	Dishwasher-Built-In, Dryer, Microwave Hood Fan, Refrigerator, Stove-Electric, Washer
Heating	Baseboard, Natural Gas
# of Stories	4
Stories	1
Has Basement	Yes
Basement	None, No Basement

### **Exterior**

Exterior	Wood, Stone, Vinyl
Exterior Features	Playground Nearby, Public Transportation, Schools, Shopping Nearby, See Remarks
Roof	Asphalt Shingles
Construction	Wood, Stone, Vinyl
Foundation	Concrete Perimeter

## **Additional Information**

Date Listed	March 23rd, 2025
Days on Market	13
Zoning	Zone 55
Condo Fee	\$584

DATA IS DEEMED RELIABLE BUT IS NOT GUARANTEED ACCURATE BY THE REALTORS® ASSOCIATION OF EDMONTON. COPYRIGHT 2025 BY THE REALTORS® ASSOCIATION OF EDMONTON. ALL RIGHTS RESERVED. Trademarks are owned or controlled by the Canadian Real Estate Association (CREA) and identify real estate professionals who are members of CREA (REALTOR®, REALTORS®) and/or the quality of services they provide (MLS®, Multiple Listing Service®)

Listing information last updated on April 5th, 2025 at 1:17pm MDT