

\$289,900 - 333 300 Palisades Way, Sherwood Park

MLS® #E4428263

\$289,900

2 Bedroom, 2.00 Bathroom, 1,086 sqft
Condo / Townhouse on 0.00 Acres

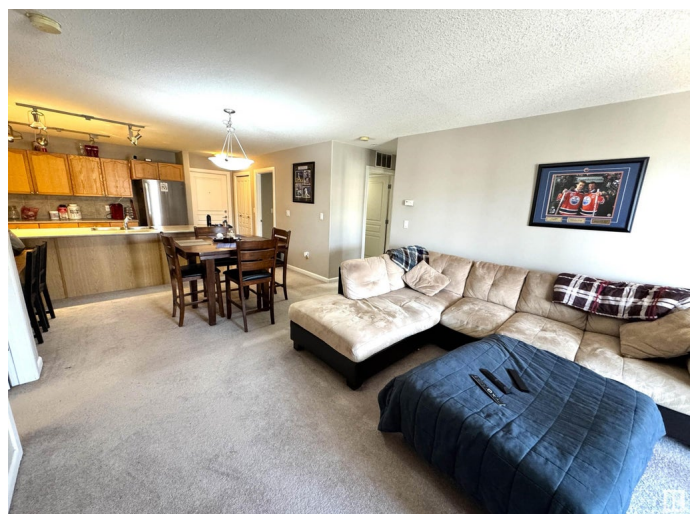
Centennial Village, Sherwood Park, AB

Bright, Open, and Affordable 2 bedroom, 2 full bathroom plus den in Sherwood Park's Centennial Village! This air conditioned equipped unit comes with all appliances, a titled heated and underground parking space with storage cage at the front, plus natural gas BBQ hookup on its covered balcony. This 18+ adult building features a theatre room, games room, exercise room, steam room, sauna, car wash bay, and is pet friendly, allowing up to two pets (below 15 lbs at shoulder, subject to board approval). Condo fees are \$574.60/mth and include heat, water, and sewer. Act fast, this is a must see!

Built in 2005

Essential Information

MLS® #	E4428263
Price	\$289,900
Bedrooms	2
Bathrooms	2.00
Full Baths	2
Square Footage	1,086
Acres	0.00
Year Built	2005
Type	Condo / Townhouse
Sub-Type	Lowrise Apartment
Style	Single Level Apartment



Status Active

Community Information

Address 333 300 Palisades Way
Area Sherwood Park
Subdivision Centennial Village
City Sherwood Park
County ALBERTA
Province AB
Postal Code T8H 2T9

Amenities

Amenities Air Conditioner, Deck, Exercise Room, Parking-Visitor, Secured Parking, Security Door, Vinyl Windows, Storage Cage
Parking Spaces 1
Parking Heated, Underground

Interior

Interior Features ensuite bathroom
Appliances Dryer, Refrigerator, Stove-Electric, Washer
Heating Fan Coil, Electric
of Stories 4
Stories 1
Has Basement Yes
Basement None, No Basement

Exterior

Exterior Wood, Stucco
Exterior Features Landscaped, Shopping Nearby, See Remarks
Roof Asphalt Shingles
Construction Wood, Stucco
Foundation Concrete Perimeter

Additional Information

Date Listed March 31st, 2025
Days on Market 15
Zoning Zone 25
Condo Fee \$575

DATA IS DEEMED RELIABLE BUT IS NOT GUARANTEED ACCURATE BY THE REALTORS® ASSOCIATION OF

EDMONTON. COPYRIGHT 2025 BY THE REALTORS® ASSOCIATION OF EDMONTON. ALL RIGHTS RESERVED. Trademarks are owned or controlled by the Canadian Real Estate Association (CREA) and identify real estate professionals who are members of CREA (REALTOR®, REALTORS®) and/or the quality of services they provide (MLS®, Multiple Listing Service®)

Listing information last updated on April 15th, 2025 at 4:02am MDT