

\$229,900 - 5510 145 Avenue, Edmonton

MLS® #E4428672

\$229,900

3 Bedroom, 1.50 Bathroom, 1,179 sqft
Condo / Townhouse on 0.00 Acres

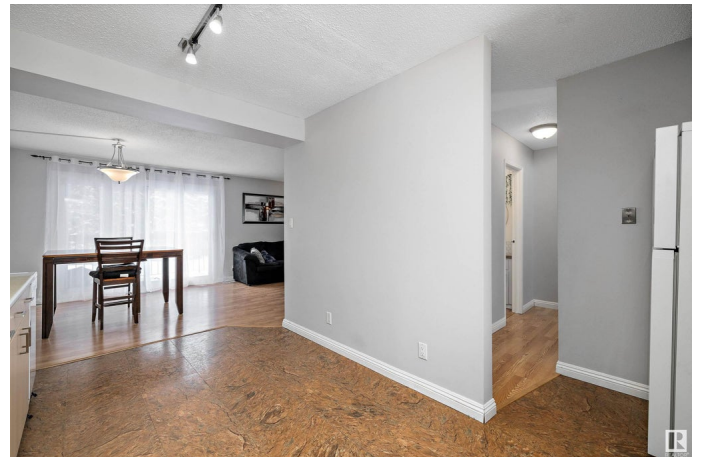
Casselman, Edmonton, AB

Welcome home to this beautiful updated 3 bedroom, 2 bathroom townhouse located in the well-managed complex of Steele Heights condo. Offering the perfect mix of comfort and convenience with low monthly condo fees. It is a fantastic opportunity for both families and investors! Step inside the spacious home to a bright and open space, well-appointed updated kitchen with plenty of storage, three good size bedrooms and two renovated bathrooms. Need more space? The partially finished basement is perfect for a family room, home office or gym, it awaits your final touch! The massive fenced yard provides the perfect setting for outdoor entertaining, gardening, BBQ or just relaxing. Located in the quiet and close-knit community of Casselman, close to shopping, dining, schools and transit. Don't miss out on this move-in-ready home!

Built in 1977

Essential Information

MLS® #	E4428672
Price	\$229,900
Bedrooms	3
Bathrooms	1.50
Full Baths	1
Half Baths	1
Square Footage	1,179



Acres	0.00
Year Built	1977
Type	Condo / Townhouse
Sub-Type	Townhouse
Style	2 Storey
Status	Active

Community Information

Address	5510 145 Avenue
Area	Edmonton
Subdivision	Casselman
City	Edmonton
County	ALBERTA
Province	AB
Postal Code	T5A 3R3

Amenities

Amenities	Closet Organizers, No Smoking Home
Parking	Stall

Interior

Appliances	Dishwasher-Portable, Dryer, Microwave Hood Fan, Refrigerator, Stove-Electric, Washer
Heating	Forced Air-1, Natural Gas
Stories	2
Has Basement	Yes
Basement	Full, Partially Finished

Exterior

Exterior	Wood, Vinyl
Exterior Features	Fenced, Landscaped, Playground Nearby, Public Transportation, Schools, Shopping Nearby
Roof	Asphalt Shingles
Construction	Wood, Vinyl
Foundation	Concrete Perimeter

Additional Information

Date Listed	April 2nd, 2025
Days on Market	2

Zoning	Zone 02
Condo Fee	\$355

DATA IS DEEMED RELIABLE BUT IS NOT GUARANTEED ACCURATE BY THE REALTORS® ASSOCIATION OF EDMONTON. COPYRIGHT 2025 BY THE REALTORS® ASSOCIATION OF EDMONTON. ALL RIGHTS RESERVED. Trademarks are owned or controlled by the Canadian Real Estate Association (CREA) and identify real estate professionals who are members of CREA (REALTOR®, REALTORS®) and/or the quality of services they provide (MLS®, Multiple Listing Service®)

Listing information last updated on April 4th, 2025 at 12:32pm MDT