

## \$184,900 - 104 604 62 Street, Edmonton

MLS® #E4430418

**\$184,900**

2 Bedroom, 1.00 Bathroom, 749 sqft

Condo / Townhouse on 0.00 Acres

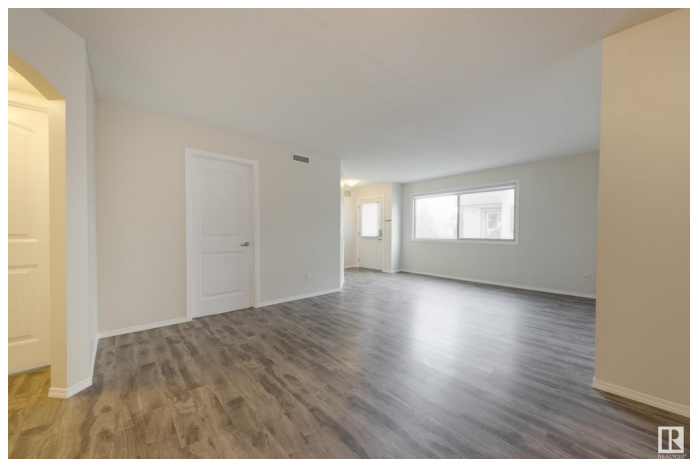
Charlesworth, Edmonton, AB

Love maintenance free living in this open concept main level bungalow basementless carriage home in SE Edmonton. Enjoy your freshly painted XXXXsq ft end unit with 2 bedrooms, 1 bath & concrete patio space. Enter your open concept living, dining & kitchen area, all with newer laminate floors. Your kitchen area features great counter space, a pantry and black appliances. Walk through your 4pc bathroom into your in suite laundry room. You have extra storage for seasonal items in your under stairs storage room & youâ€™ll love the energized parking stall in winter. No grass to mow or snow to shovel. Steps from visitor parking and additional rental stalls available. Walk around the two ponds just steps from the NW corner of complex. Convenient to the Anthony Henday and Ellerslie Road, with nearby shopping and transit.

Built in 2008

### Essential Information

MLS® #	E4430418
Price	\$184,900
Bedrooms	2
Bathrooms	1.00
Full Baths	1
Square Footage	749



Acres	0.00
Year Built	2008
Type	Condo / Townhouse
Sub-Type	Carriage
Style	2 Storey
Status	Active

### **Community Information**

Address	104 604 62 Street
Area	Edmonton
Subdivision	Charlesworth
City	Edmonton
County	ALBERTA
Province	AB
Postal Code	T5T 0K4

### **Amenities**

Amenities	Closet Organizers, No Animal Home, No Smoking Home, Parking-Plug-Ins, Parking-Visitor, Patio
Parking Spaces	1
Parking	Stall

### **Interior**

Appliances	Dishwasher-Built-In, Fan-Ceiling, Microwave Hood Fan, Refrigerator, Stacked Washer/Dryer, Stove-Electric, Window Coverings
Heating	Fan Coil, Natural Gas
# of Stories	2
Stories	1
Has Basement	Yes
Basement	None, No Basement

### **Exterior**

Exterior	Wood, Vinyl
Exterior Features	Airport Nearby, Environmental Reserve, Low Maintenance Landscape, No Through Road, Park/Reserve, Public Swimming Pool, Public Transportation, Shopping Nearby, Stream/Pond
Roof	Asphalt Shingles
Construction	Wood, Vinyl
Foundation	Concrete Perimeter

## Additional Information

Date Listed	April 11th, 2025
Days on Market	10
Zoning	Zone 53
Condo Fee	\$312

DATA IS DEEMED RELIABLE BUT IS NOT GUARANTEED ACCURATE BY THE REALTORS® ASSOCIATION OF EDMONTON. COPYRIGHT 2025 BY THE REALTORS® ASSOCIATION OF EDMONTON. ALL RIGHTS RESERVED. Trademarks are owned or controlled by the Canadian Real Estate Association (CREA) and identify real estate professionals who are members of CREA (REALTOR®, REALTORS®) and/or the quality of services they provide (MLS®, Multiple Listing Service®)

Listing information last updated on April 21st, 2025 at 7:17pm MDT