

\$205,000 - 1407 9020 Jasper Avenue, Edmonton

MLS® #E4430984

\$205,000

1 Bedroom, 1.50 Bathroom, 1,207 sqft

Condo / Townhouse on 0.00 Acres

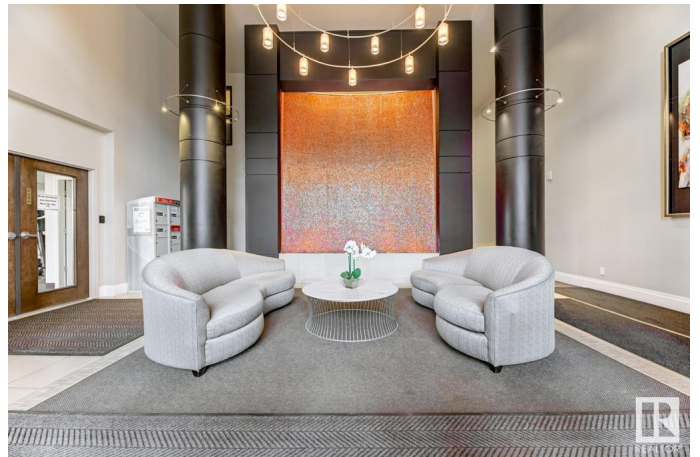
Boyle Street, Edmonton, AB

SITUATED IN JASPER PROPERTIES - an exclusive upscale condominium complex. This 1207 sq ft 1 bedroom plus den condo has tons of space. The kitchen has maple cabinets, tile backsplash, granite countertops, S/S appliances, deep undermount sink & breakfast bar. Very spacious dining and living room with gas fireplace. Huge windows with the incredible panoramic city and downtown views. Extra large primary bedroom has a spacious closet and ensuite with separate shower and jetted soaker tub. Den with french doors could also be used as a second bedroom or guest room. Lots of storage, large balcony, expansive windows. Grand entrance lobby with relaxing waterfall, fully equipped exercise room, bus at the door, or walk to city center. The building is extremely secure and this unit also comes with one titled heated underground parking stall. Close to the downtown core, amenities, shopping & restaurants.

Built in 2005

Essential Information

MLS® #	E4430984
Price	\$205,000
Bedrooms	1
Bathrooms	1.50
Full Baths	1



Half Baths	1
Square Footage	1,207
Acres	0.00
Year Built	2005
Type	Condo / Townhouse
Sub-Type	Apartment High Rise
Style	Single Level Apartment
Status	Active

Community Information

Address	1407 9020 Jasper Avenue
Area	Edmonton
Subdivision	Boyle Street
City	Edmonton
County	ALBERTA
Province	AB
Postal Code	T5H 3S8

Amenities

Amenities	Air Conditioner, Deck, Exercise Room, No Animal Home, No Smoking Home, Parking-Visitor, Secured Parking, Security Door
Parking Spaces	1
Parking	Heated, Underground

Interior

Interior Features	ensuite bathroom
Appliances	Dishwasher-Built-In, Dryer, Refrigerator, Stove-Electric, Washer
Heating	Heat Pump, Natural Gas
Fireplace	Yes
Fireplaces	Insert
# of Stories	22
Stories	1
Has Basement	Yes
Basement	None, No Basement

Exterior

Exterior	Concrete
Exterior Features	Back Lane, Public Transportation, River Valley View, Shopping Nearby, View City, View Downtown

Roof	Metal
Construction	Concrete
Foundation	Concrete Perimeter

Additional Information

Date Listed	April 15th, 2025
Days on Market	4
Zoning	Zone 13
RE / Bank Owned	Yes
Condo Fee	\$892

DATA IS DEEMED RELIABLE BUT IS NOT GUARANTEED ACCURATE BY THE REALTORS® ASSOCIATION OF EDMONTON. COPYRIGHT 2025 BY THE REALTORS® ASSOCIATION OF EDMONTON. ALL RIGHTS RESERVED.Trademarks are owned or controlled by the Canadian Real Estate Association (CREA) and identify real estate professionals who are members of CREA (REALTOR®, REALTORS®) and/or the quality of services they provide (MLS®, Multiple Listing Service®)

Listing information last updated on April 19th, 2025 at 8:32am MDT